



trinity  
engineering



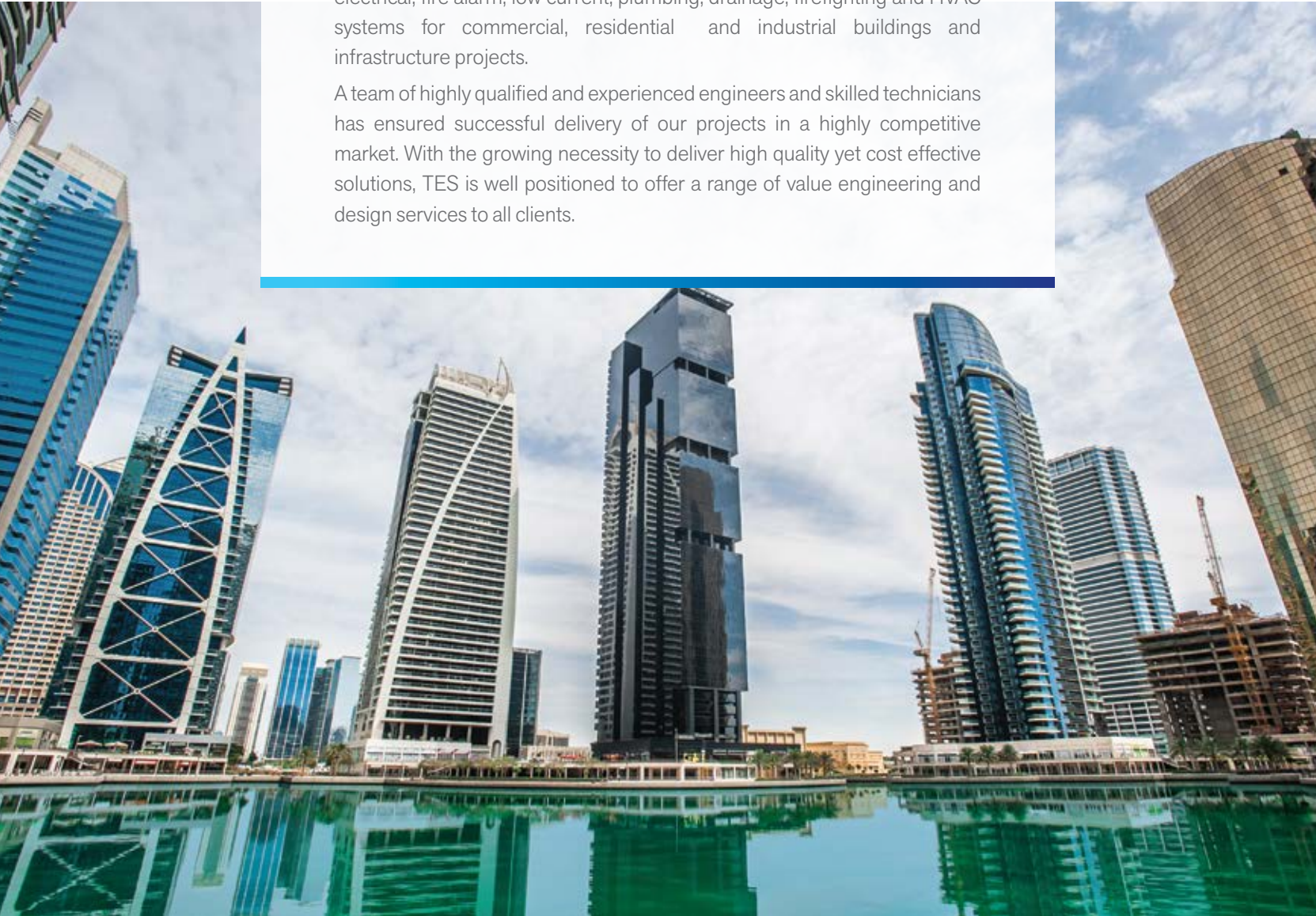


## about us

Trinity Engineering Services (TES) is a leading electromechanical contractor in the Middle East. Having executed a large number of prestigious projects in the last three decades, TES has become a name synonymous with integrity and versatility.

Right from the stage of design, supply and installation, up to testing and commissioning of complete MEP systems, the services offered include electrical, fire alarm, low current, plumbing, drainage, firefighting and HVAC systems for commercial, residential and industrial buildings and infrastructure projects.

A team of highly qualified and experienced engineers and skilled technicians has ensured successful delivery of our projects in a highly competitive market. With the growing necessity to deliver high quality yet cost effective solutions, TES is well positioned to offer a range of value engineering and design services to all clients.



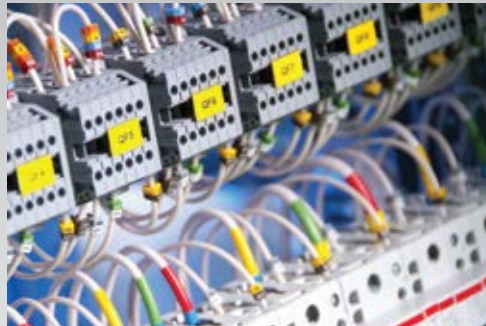
## QHSE focus

At TES, strict adherence to quality and professional workmanship is paramount. The company complies with all relevant international quality and safety standards, adhering to ISO 9001: 2015, ISO 14001: 2015 and OHSAS 18001: 2007. The methodical approach of our team of experienced and skillful engineers/technicians has led us to superior levels of quality, safety and reliability. By adopting efficient and sustainable practices, the company has been able to minimize the impact of its operations on the environment and the community as a whole.

mechanical



electrical



plumbing



## MEP services

- 0 Design, supply, installation, testing and commissioning of complete MEP systems.
- 0 Electrical, fire alarm, voice evacuation, low current, plumbing, drainage, firefighting, HVAC and ventilation systems for all types of commercial, residential and industrial buildings and infrastructure projects.



# electrical services

rove hotel

- Supply and installation of transformers, H.T. switchgears, cable, termination, etc.
- Lighting and Small Power Systems that include conduiting and wiring, cabling and termination, main distribution boards, sub main distribution boards, power factor correction capacitor banks including generator and ATS panels.
- Low Current Systems that include conduiting & wiring for CCTV, access control, gate barrier, structured cabling, lighting control, intercom, SMATV/MATV, PABGM, etc.
- Bus-bar Riser Systems, cable tray with ladder and trunking.
- Supply & installation of fire alarm, Central Emergency Systems and UPS.
- Lightning Protection and Earthing Systems.



motor control room



LV room



bus-bar riser



H/L cable tray & trunking



# plumbing services

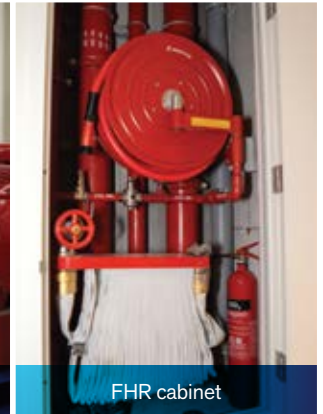
- ◌ **Drainage System:** Underground and Above Ground Drainage Systems that include pipes, fittings, floor drains, cleanouts, rainwater outlets, catch basins and channel gratings, sewage and storm water lifting stations.
- ◌ **Water Supply System:** Domestic Cold and Hot Water Systems that include water transfer & booster pumps, water tanks, water heaters (central and domestic), Water Filtration, Water Treatment Systems and Solar Water Heaters.
- ◌ **Fire Fighting System:** Sprinklers, fire hose reels, landing valves, pump sets, piping with valves and accessories, FM200 / Inergen, Deluge Systems, etc.
- ◌ **Sanitary wares & accessories:** Water closets, wash basins, bidets, bathtubs, shower trays, jacuzzi, whirlpools, etc.
- ◌ **Specialized Systems:** Compressed air, central vacuum, LPG, etc.



fire fighting pump room



pump installation



FHR cabinet



palm island villas



# HVAC services

- Heat load calculation, selection of equipment and energy conservation in terms of savings in power, building automation (BMS), etc.
- AC Systems (DX Type/ Chilled Water System):** Reciprocating screw chillers, centrifugal chillers in the range of 100-3500 TR central plants and District Cooling System up to a capacity of 9800 TR, chilled water pipe, fitting, valves, accessories, etc. Fabrication of ducts in accordance with SMACNA/DW 142 standard and installation as per ASHRAE standard.
- Specialized Systems:** Smoke Management System, Staircase Pressurization System, 24x7 Monitoring System, etc. Management of specific noise/vibration control prior to the installation of chillers, pumps, air handling units, fan coil units, extract fans, etc. Air balancing/water balancing prior to final testing and commissioning, in accordance with CIBSE.





# control rooms



emirates airlines staff housing

## Electrical Room

- Installation of floor mounted LV panels
- Mimic arrangement for LV panels
- High level cable trays

## Control Room

- Fire alarm & voice evacuation control panel
- Central battery control panel
- Civil Defence control panel
- BMS control panel

## Fire Pump Room

- Electric, diesel and jockey pumps with UL/FM and local Civil Defence approvals
- Piping and valves

## Generator Room

- DG sets, diesel tank and ATS panel
- Emergency distribution board
- Radiator/engine exhaust ducting and piping
- Acoustic treatment of DG room



LV room



security control room



generator installation



# other services



GEMS wellington academy

## 0 Mechanical Floor

- Fresh air handling units
- Coordination services through OTS
- High level drainage/chilled water pipes/firefighting services

## 0 High Level Coordinated Services

- Jet fans
- Cable Trays/trunking
  - Power
  - Low current
- Firefighting services
- Plumbing/drainage services

## 0 GRP Sectional Water Tank

GRP sectional water tank to suit site conditions on mechanical floor with internal partition for domestic and firefighting reserve.



PRV station



sectional water tank



pump room



chilled water piping



# our associates

## Clients:

- Al Fajer Properties
- Abu Dhabi National Oil Co.
- Dubai Ports Authority
- Dubai International Real Estate
- Du
- Emaar Properties
- Emirates Airlines
- Exceed Precast
- Flex Industries
- Govt. of Dubai - Real Estate Department
- Gems Education
- Han World Wide Enterprises
- Indigo Properties
- Nakheel
- National Cable Industry
- Techno Build Space
- Tiffany Realty

## Consultants:

- Al Hashemi (Architects, Engineers, Planners)
- Al Turath Engineering Consultant
- Al Wasel Al Jadeed Engineering Consultants
- Archgroup
- Arenco (Architectural & Engineering Consultants)
- Arif & Bintok Consulting (Architects & Engineers)
- Arkiplan
- Bel Yoahah Architectural & Engineering Consultants
- Chawla Architect & Consultants
- Dubai Consultant
- Halcrow
- I.M. Kadri Consultants
- Ian Banharn & Associates
- John R Harris & Partners
- Kennedy & Donkin Middle East
- KEO
- Khatib & Alami (Consolidated Engineering Co.)
- National Engineering Bureau
- Robert, Marshall, Johnson, Marshall
- WS Atkins & Partners Overseas

## Contractors:

- Al Ahmadiyah Contracting & Trading
- Al Habtoor Engineering Enterprises Co.
- Al Hudaiba Contracting
- Al Rostamani Pegel
- Al Shafar General Contracting Co
- Arabtec - Arab Technical Construction Co.
- Associated Construction & Investment Co.
- Belhasa Engineering & Contracting Co.
- Bu Haleeba Contracting
- Dutco Construction Co.
- Engineering Contracting Co.
- Khansaheb Civil Engineering
- Larsen & Toubro
- System Construct
- S.K. Engineering & Construction
- Ghantoot Gulf Contracting
- Ghantoot Tpt & Gen. Contracting
- Chicago Maintenance & Construction
- Shapoorji Pallonji ME
- China Railway



# our projects



marina scape



akoya oxygen villas



trident grand residence



al sandos



aloft hotel



manar mall





ruwais housing complex



tiffany tower



wasl residential/ commercial building







a member of



trinity holdings

[www.trinityholdings.com](http://www.trinityholdings.com)



trinity  
engineering

**trinity engineering services**

p.o. box 8807, dubai, uae

**t:** +971 4 338 6070

**f:** +971 4 338 9238

**e:** [tes@trinityholdings.com](mailto:tes@trinityholdings.com)

**[www.tes.ae](http://www.tes.ae)**